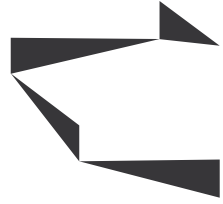


# GEORG ELSER HALLE

Venue Specifications January `26





**GEORG  
ELSER  
HALLE**

march 2025

# TECHNICAL VENUE SPECIFICATIONS

## I. Venue Access + Parking

## II. Contact

## III. Production

1. Off Stage + Technical
2. Stage

## IV. Backstage Area

## V. Miscellaneous

## VI. Technical

1. Power
2. Lights
3. Audio
4. FoH / Riggin / Misc
5. Stage Plot



# VENUE

## Capacity

without seating full:	<b>2000 – 2100</b>
without seating infield:	<b>1700</b>
seating:	<b>1092</b>
seating with riser stage:	<b>up to 1050</b>

**Visibility** obstructions: **no**

**Platform** wheelchairs /  
**Handicap** accessible: **accessible yes**  
**with handicapped accessible toilets**  
platform upon request

**Dimensions** Main Hall: **1174,5 m<sup>2</sup>**



# CONTACT

## Booking

[booking@georgelserhalle.de](mailto:booking@georgelserhalle.de)

## Production manager

[georgelserhalle@sono-projects.com](mailto:georgelserhalle@sono-projects.com)

## Technical manager

Protones – exclusive in-house service provider

## Postal Adress

Georg Elser Halle  
Feldstraße 66 (Bunker)  
D-20359 Hamburg

# ACCESS & PARKING

G-Maps

Feldstraße 66, 20359 Hamburg



## Parking direction

Always drive in forward

**Load-in area in front of the elevator:** Always back in

## „Around the bunker“

only works with  
Sprinter / 12.5-ton trucks

## Truck + Trailer

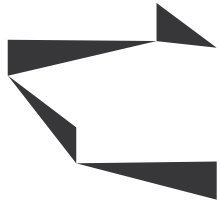
can only unload in front of the  
freight elevator and must  
then move to the parking area

**! Only 16A bus power connection !**

## Link „Truck parking“:

Heiligengeistfeld, or  
Messe Parking Sternschanze





# PRODUCTION

## ELEVATOR , OFFSTAGE + TECHNICAL

**External PA possible:**

no

**FoH position:**

center, ground level

**Loading Path:**

from truck / nightliner to elevator,  
from there at ground level to main hall

**Dimensions:**

elevator / 2,09m width x 2,95m depth x 2,1m height /  
elevator door / 1,8m width x 2,1m height  
4000 kg

**Forklifts:**

no

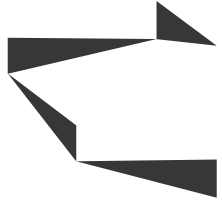
**Parking (Power):**

upon request



1

Freight elevator



# PRODUCTION

## STAGE

### Stage system

non fixed **Bütec**

**56 x Stage Desk** 2,0m x 1,0m

### Stage width

**12m**

### Stage depth

**8m**

### Stage height

**1m**

### Clearance

truss: **6m**

ceiling: **7m**



# BACKSTAGE AREA

## Catering Area (5th floor):

**1x Lounge room** (Couches, armchair, bar stools, tables, Coat rack, full-length mirror, Refrigerator)

**1x separate Artistroom** (full-length mirror, couch, armchair, desk, coffee table, refrigerator, coat rack)

## Access to the venue:

**Exit towards terrace** – Directly opposite are the passenger elevators, freight elevator, and stairwell.

**Venue is located 2 floors above the backstage area.**  
The route is covered.

## Catering Information:

**Freely selectable caterer**; live cooking not recommended  
**Storage room available** directly behind the catering area

**Two large beverage refrigerators** available

**No kitchen equipment**, appliances, or tableware provided  
**2x** Production offices/Greenroom / **4x** Showers in 2 separate rooms / **2x** additional Cloakrooms (empty)

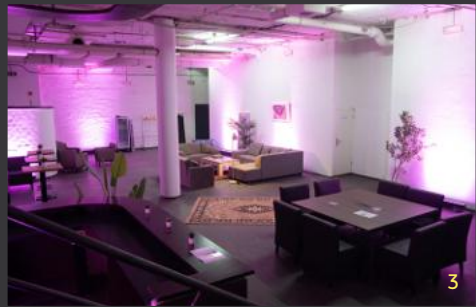
## Rooms Halle:

## Washer / Dryer:

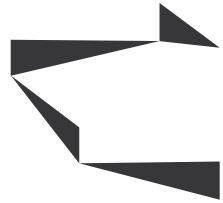
NO

**Wifi:**

YES

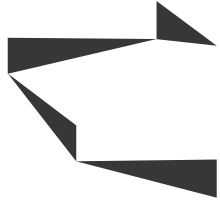


- 1 **backstageräume**  
@georg elser halle
- 2 **produktionsbüro**  
stage-proximity
- 3+4 **Main Backstage + Catering Room**



# MISCELLANEOUS

<b>Merchandise</b>	<b>limited by the defined area,</b> approx. 3,00m x 2,00m
Merchandise <b>Fee</b>	<b>250€ brutto</b>
<b>Soundlimit</b>	<b>99 dB</b> LAeq, 30Min 135 dB (C) peak / DIN 15905-5
<b>Load from</b> <b>Sound check from</b>	<b>upon agreement</b> <b>flexible</b>
<b>Curfew show</b> <b>Curfew venue</b>	<b>11:00 pm</b> <b>01:00 am</b>
<b>SFX / Pyro</b> <b>Haze / Smoke</b>	<b>not possible</b> <b>possible</b>



# TECHNICAL

## POWER

<b>Stage</b>	<b>1 x</b>	<b>CEE 125A 3LNPE 400V</b>
VK01		Wall Stage Left
upstage left	<b>1 x</b>	<b>CEE 63A 3LNPE 400V</b>
		Wall Stage Left
<b>100A max</b>	<b>1 x</b>	<b>CEE 32A 3LNPE 400V</b>
combined		Wall Stage Left
power draw	<b>1 x</b>	<b>CEE 16A 3LNPE 400V</b>
		Wall Stage Left
	<b>3 x</b>	<b>Schuko 16A LNPE 230V</b>
		Wall Stage Left
<b>FoH</b>	<b>1 x</b>	<b>CEE 16A 3LNPE 400V</b>
		Floor FoH
	<b>2 x</b>	<b>Schuko 16A LNPE 230V</b>
		Floor FoH

## DATA

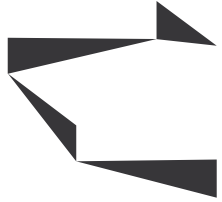
dry CAT6 and XLR 3p lines from FoH to Stage and Rack available on request



## LIGHTS

# TECHNICAL

- 13 x **Elation Fuze SFX Spots**
- 13 x **Elation Fuze Wash Z350 Wash**
- 8 x **Elation Fuze Profile CW**
- 4 x **Chauvet Strike Array 4 Blinder**
- 8 x **Chauvet Color Strike M Strobe**
- 8 x **Chauvet COLORado Batten Q15**
- 1 x **Litecraft Shock Fog Fog**
- 2 x **Magmatic Magma Prime Hazer**



# TECHNICAL

## AUDIO

### PA

12 x

L'Acoustics K3 (6 per side)

8 x

L'Acoustics KS28 Subs (cardioid)

2 x

L'Acoustics A10 Wide Centerfill

2 x

L'Acoustics A10 Wide Nearfill

### Monitoring

6 x

L'Acoustics X12 Wedge

4 x

L'Acoustics A15 Wide Sidefill (2 per side)

6 x

L'Acoustics KS21 Sidefill (3 per side)

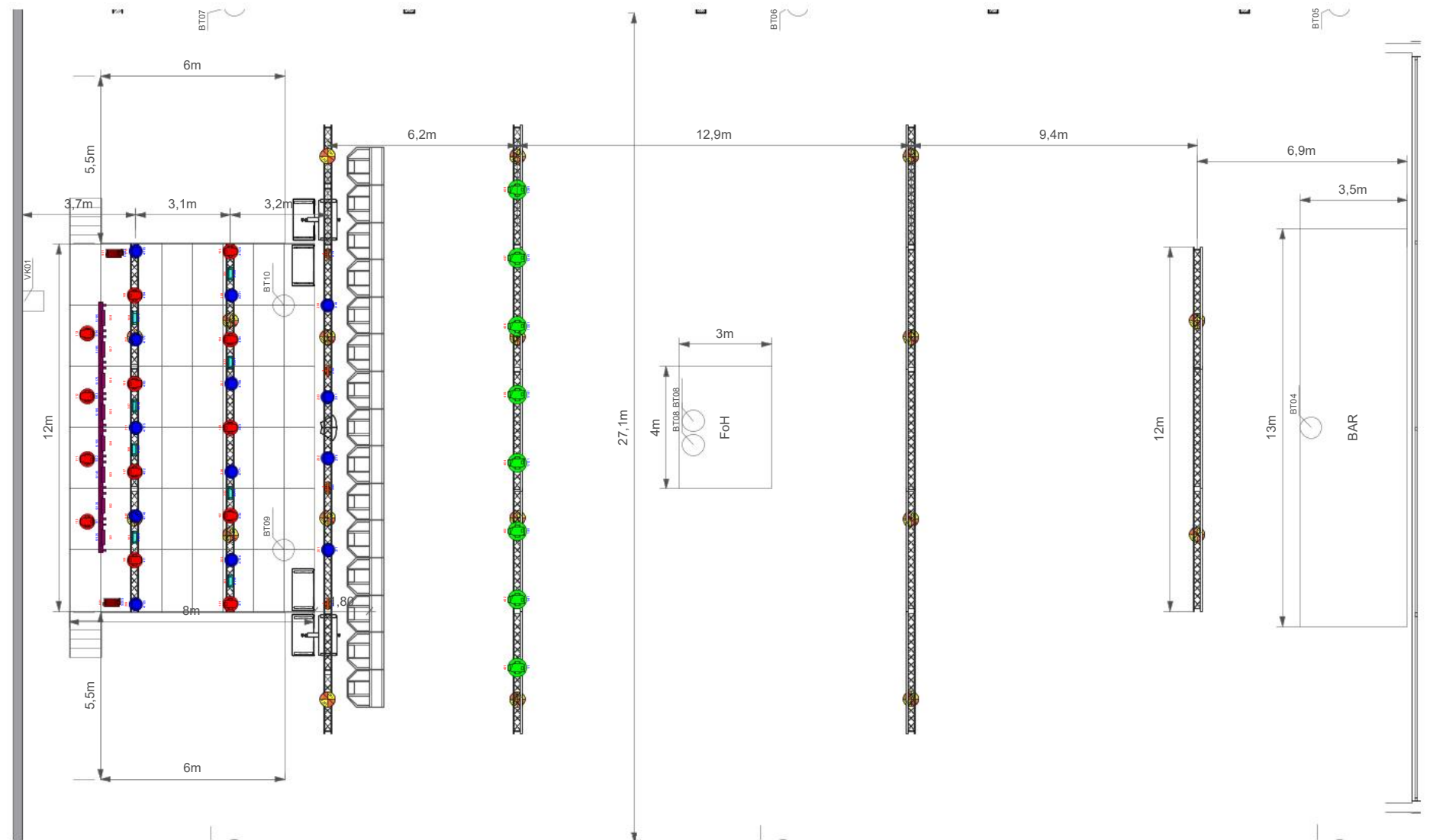
**all including Amping LA12x and LA4x**



# TECHNICAL

## LIGHT PLOT

	13	<b>Elation Fuze SFX</b> Kein
	8	<b>Elation Fuze Profile CW</b> Elation Fuze Profile Ext.III
	13	<b>Elation Fuze Wash Z350</b> Elation Fuze Wash Z350 15ch.III
	8	<b>Chauvet Color Strike M</b> Mehrere Werte
	4	<b>Chauvet Strike Array 4</b> Chauvet Strike Array 4 4ch.III
	8	<b>Chauvet COLORado Batten Q15</b> Kein
	2	<b>MAGMATIC MAGMA Prime</b> Kein



# SEE YOU SOON

